



INSTRUCTION BULLETIN

No. 9006790
Machine: S30 X4
Published: 07-2010
Rev. 00

NOTE: DO NOT DISCARD the Parts List from the Instruction Bulletin. Place the Parts List in the appropriate place in the machine manual for future reference. Retaining the Parts List will make it easier to reorder individual parts and will save the cost of ordering an entire kit.

NOTE: Numbers in parenthesis () are reference numbers for parts listed in Bill of Materials.

Installation instructions for **kit number 9006789**

SYNOPSIS:

This kit contains the parts needed to replace the rear right side hydraulic tubes on S30 X4 machines. Please follow step-by-step instructions.

SPECIAL TOOLS / CONSIDERATIONS: NONE

(Estimated time to complete: 2 hours)

When assembling / disassembling hydraulic components:

1. Thoroughly clean outside of hydraulic components **before** disconnecting hydraulic hoses or fittings to prevent contaminants from entering system.
2. Flush hoses and fittings with air, solvent, or hydraulic fluid and cap disconnected hoses or open ports to prevent contaminants from entering system.
3. Mark hydraulic hoses with locations of where they are attached. Markings make it easier to reconnect hoses to proper locations.
4. Discard all hydraulic fluid drained from the system. Use only new approved hydraulic fluid to replenish hydraulic reservoir. Hydraulic fluid is potentially dangerous to the environment. Obey all federal, state, and local laws/regulations governing the disposal of environmentally hazardous materials when disposing hydraulic fluid.

PREPARATION:

1. Park the machine on a clean level surface, turn off the machine, remove the key, and set the parking brake.

FOR SAFETY: Before leaving or servicing machine, stop on level surface, set parking brake, turn off machine, and remove key.

2. Place a chock block in front of the left and right front tires.

3. Jack up the left rear end of the machine and position jack stands underneath the machine for additional support. Refer to the MAINTENANCE section of the Operators Manual for additional information.

FOR SAFETY: When servicing machine, block machine tires before jacking machine up. Use a hoist or jack that will support the weight of the machine. Jack machine up at designated locations only. Support machine with jack stands.

4. Remove the right rear tire from the machine. Set the tire and lug nuts aside.

INSTALLATION:

1. Remove both existing rear wheel guards from the right drive support housing. Set the mounting hardware aside. Discard both wheel guards Refer to Fig. 1.

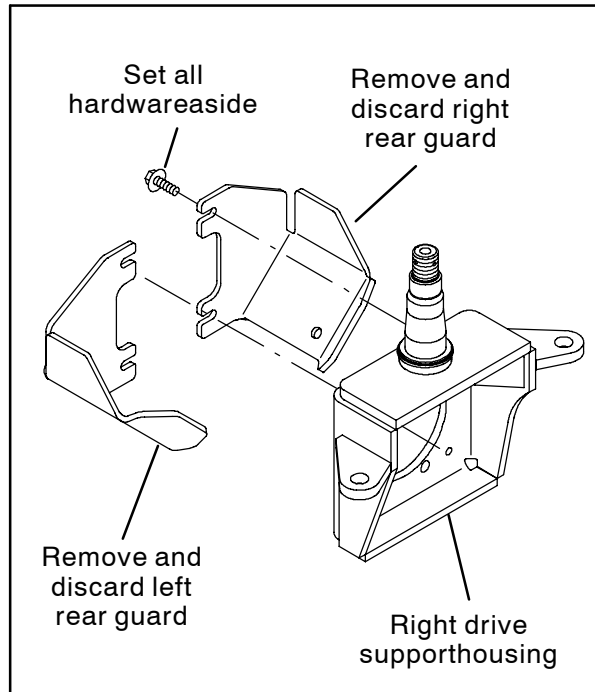


FIG. 1

2. Remove the 2-hole tube clamp from the hydraulic tubes attached to the right wheel drive motor. Set the clamp and mounting hardware aside. Refer to Fig. 2.

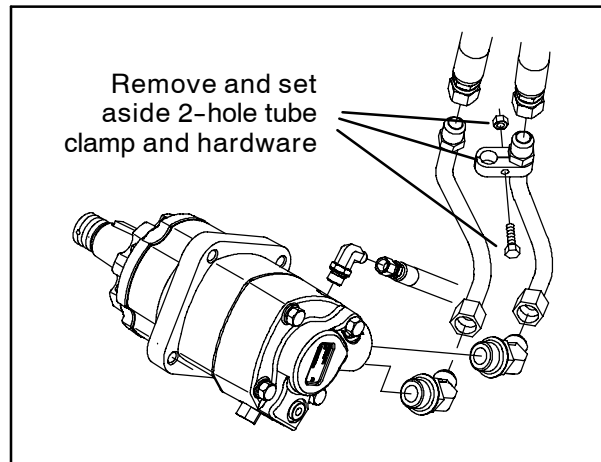


FIG. 2

3. Remove both hydraulic tubes from the right wheel drive motor. Discard the hydraulic tubes. Refer to Fig. 3.
4. Disconnect the 46" hydraulic hose from the t-fitting and the right wheel drive motor. Discard the hose. Refer to Fig. 3.
5. Connect the 51" hydraulic hose (4) to the t-fitting. Refer to Fig. 3.

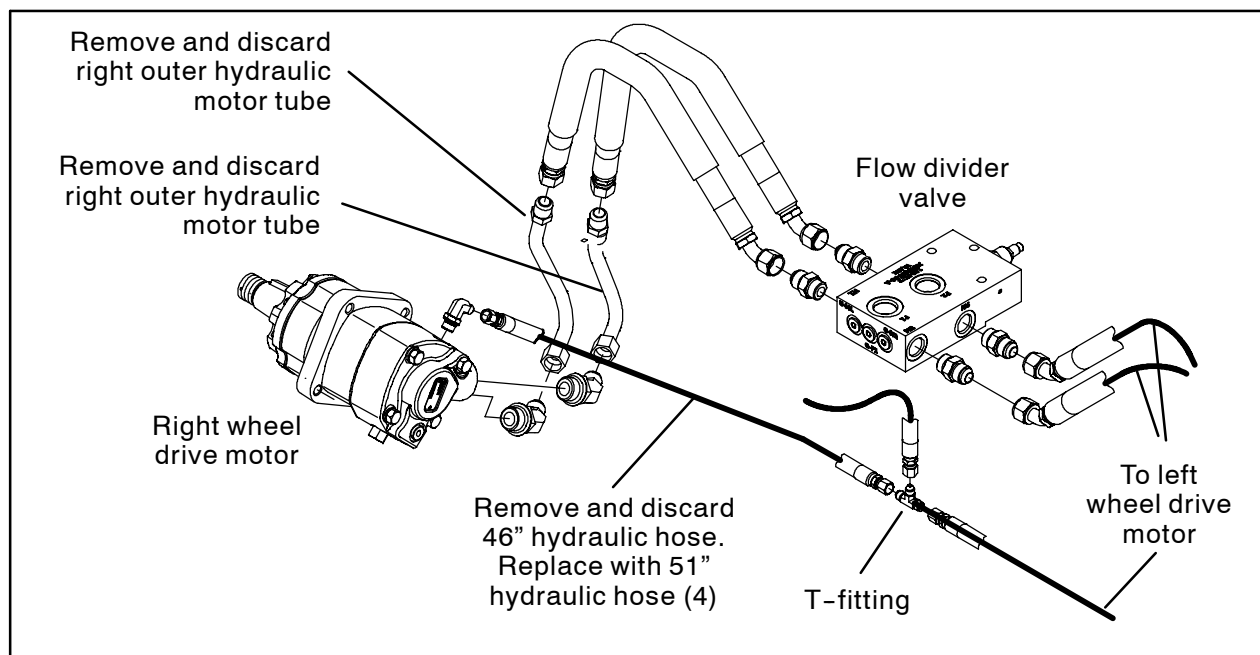


FIG. 3

6. Route the 51" hydraulic hose (4) to the right wheel drive motor and connect the hose to the motor. Refer to Fig. 4.
7. Install the 2-hole tube clamp onto the hydraulic tube (2). Refer to Fig. 4.
8. Install the new hydraulic tube (2) onto the hydraulic motor and connect the hose from flow divider valve port M3 to the hydraulic tube. Refer to Fig. 4.
9. Install the hydraulic tube (1) onto the machine and connect the hose from flow divider valve port M1 to the hydraulic tube. Refer to Fig. 4.
10. Position the 2-hole tube clamp onto the hydraulic tube (1) and secure the clamp onto both tubes. Refer to Fig. 4.
11. Remove the hex nut and washer holding the hydraulic cylinder assembly to the right drive support housing, slide the tube support bracket (5) onto the hex screw, and reinstall the hex nut and washer. Refer to Fig. 4.
12. Insert the hydraulic hoses attached to the hydraulic tube (1) and hydraulic tube (2) into the cable clamp (7). Refer to Fig. 4.
13. Use the hex screw (8), spacer (6), flat washer (9), and hex nut (10) to install the cable clamp (7) onto the tube support bracket (5) and secure the hoses. Refer to Fig. 4.

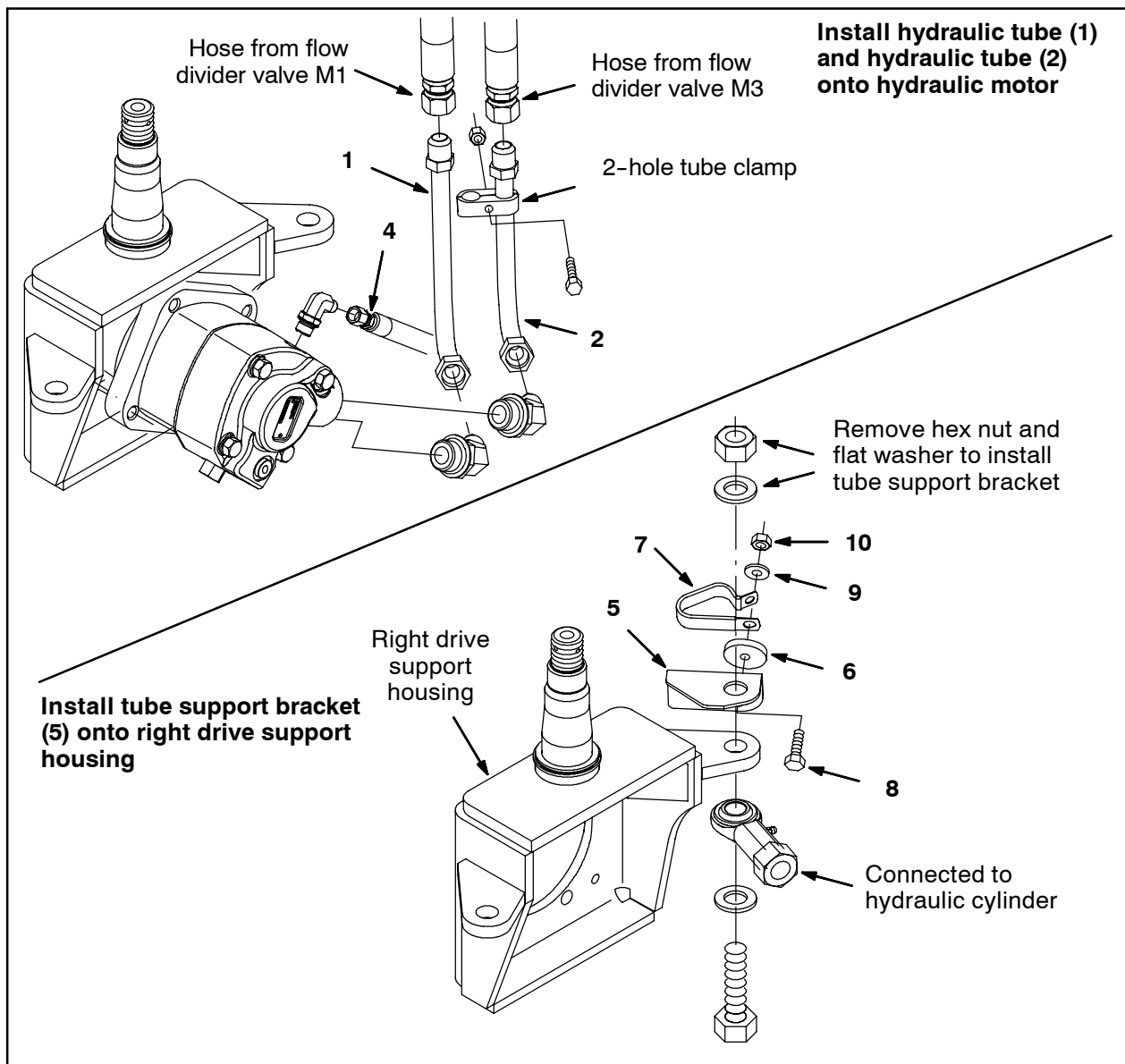


FIG. 4

14. Use saved hex screws to install the right rear guard (3) onto the right drive support housing. Refer to Fig. 5.
15. Reinstall the right rear tire onto the machine.
16. Remove the jack stands from underneath the machine and lower the machine to the floor.
17. Check the hydraulic fluid level. If necessary, add hydraulic fluid to the system.
18. Start and test the machine. Observe the replaced hydraulic components and hose connections for leaks.

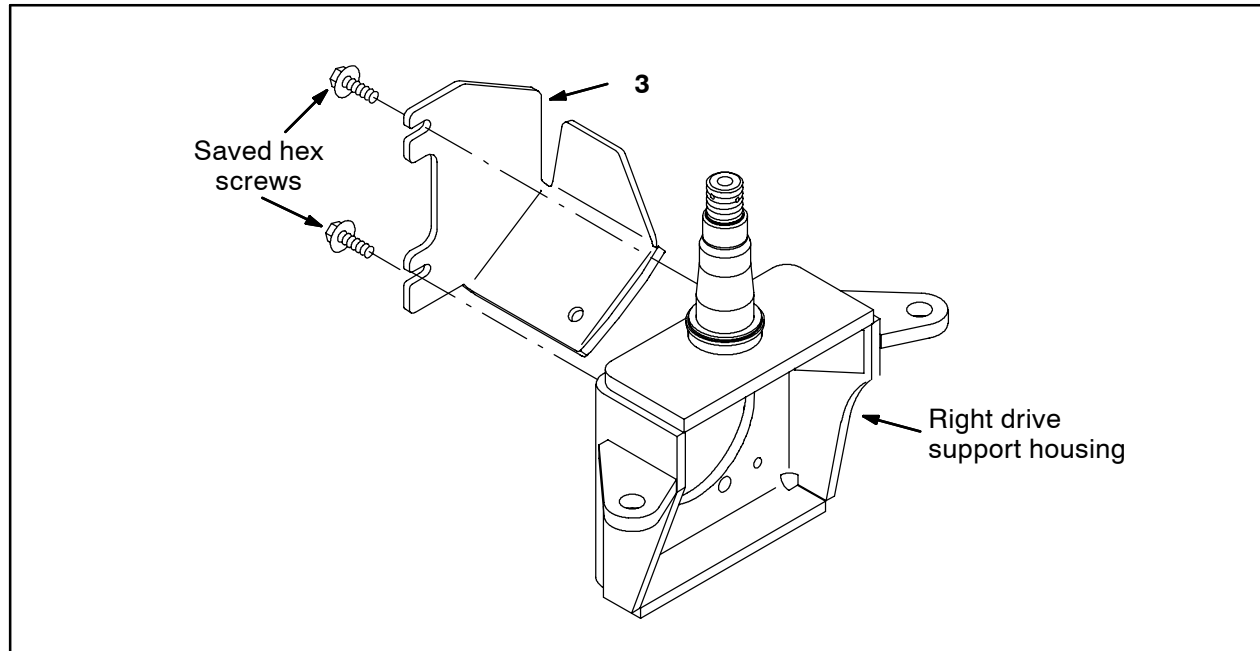


FIG. 5

Bill of Materials for Wheel Kit, RH, Replmt (4X) - 9006789

Ref.	Tennant Part No.	Description	Qty.
▽	9006789	Wheel Kit, RH, Replmt (4X)	1
▲ 1	1047806	Tube, Hyd, Right Outside	1
▲ 2	1047720	Tube, Hyd, Right Inside	1
▲ 3	1047929	Guard, Rear, RH (4-Wheel)	1
▲ 4	367113	Hose, Hyd, Med04, JF04Str/JF04Str, 051.0	1
▲ 5	1048061	Bracket, Support, Tube	1
▲ 6	1048084	Spacer, 0.35B, 1.50D, 0.25L, PL	1
▲ 7	09570	Clamp, Cable, Stl, 0.9X1.8X0.62W, 1 Hole	1
▲ 8	39277	Screw, Hex, M8 X 1.25 X 25, 8.8	1
▲ 9	32491	Washer, Flat, 0.31, Std	1
▲ 10	07791	Nut, Hex, Flng, M8 X 1.25	1

TENNANT COMPANY
P. O. Box 1452
Minneapolis, MN 55440-1452